



# VersiCell®

Sub-Surface Drainage Modules



043 - 002  
Made from minimum  
50% recycled material



ecospecifier  
2010/11

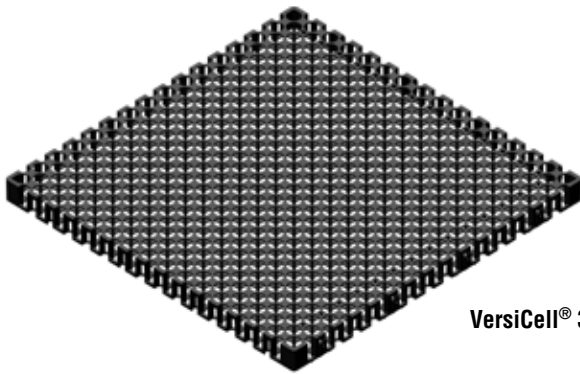
as seen on [www.ecospecifier.org](http://www.ecospecifier.org)



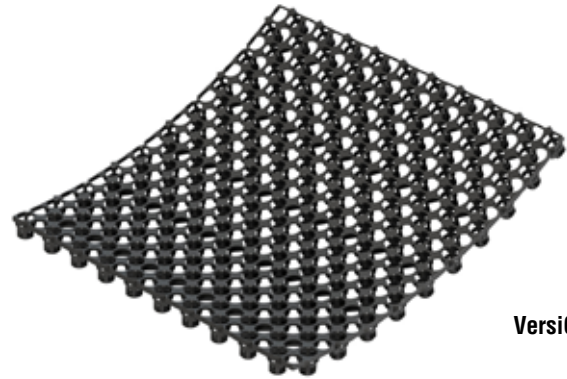
Solutions for Sustainable Urban Development

# VersiCell®

VersiCell® is designed and engineered for sub-surface drainage as well as for providing waterproofing membrane protection and heat and sound insulation. VersiCell® eliminates the use of heavy gravel aggregates for sub-surface drainage and screeds for waterproofing membrane protection in planter boxes and roof gardens and is applied also on retaining walls to relieve hydrostatic pressure.



VersiCell® 3050



VersiCell® 3150

VersiCell® rigid or flexible modules, is a lightweight high-strength drainage cell manufactured from 100% recycled plastics.

VersiCell® has a narrow-profile and an open surface design with high volume internal void that enables rapid capture and transport of high water volumes. VersiCell® is only approximately 2% of the aggregate weight of gravel for equivalent drainage discharge capacity. Its narrow profile makes a greater soil depth possible in planter beds and thus allows a wider variety of landscape plants to be utilised.

VersiCell® modules are easy to install by interlocking one to another either horizontally or at right angles or simply by abutting.

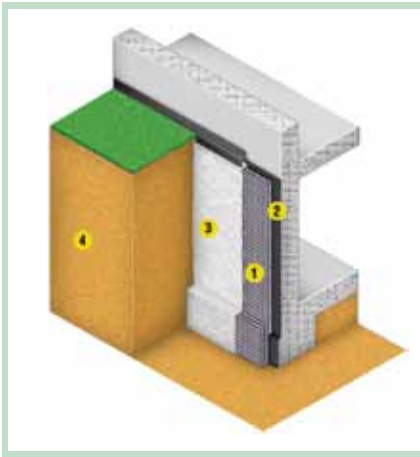
VersiCell® modules can flex and conform to curved surfaces and their ability to nest and stack reduces on-site storage and container space requirements and transportation costs.

## Applicable Areas

- Landscaped decks
- Paved areas and roadways
- Sports fields
- Retaining/basement walls
- Pond filter systems
- Bridge abutments
- Tunnels and landfills
- Golf courses

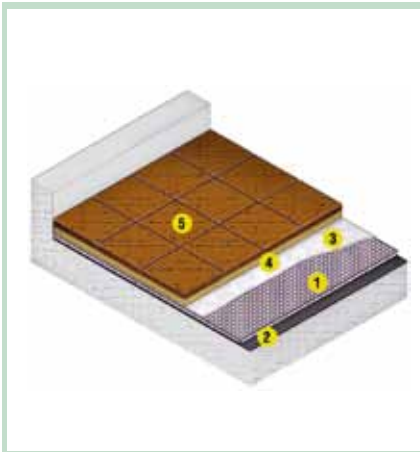


VersiCell® has international patents pending



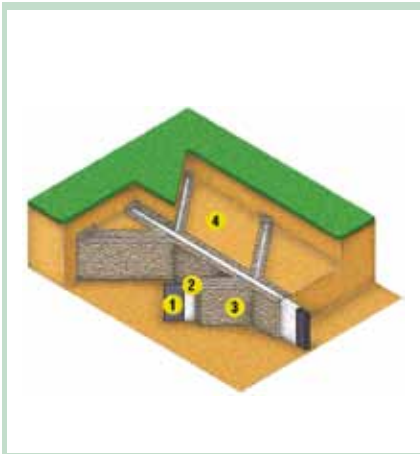
1. VersiCell®
2. Waterproofing membrane
3. Geotextile
4. Soil

### Basement Wall



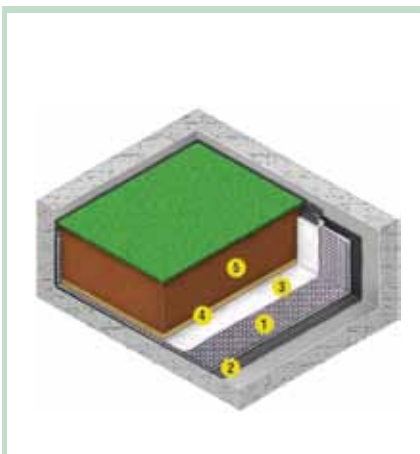
1. VersiCell®
2. Waterproofing membrane
3. Geotextile
4. Sand
5. Pavers

### Plaza Deck



1. VersiCell®
2. Geotextile
3. Coarse Sand
4. Soil

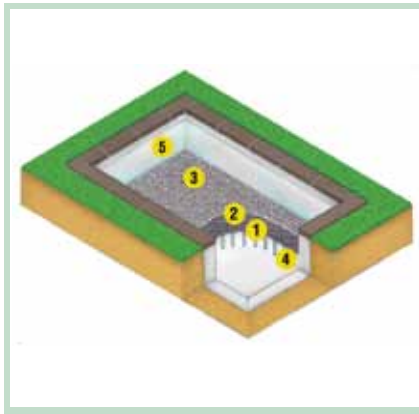
### Sports Field



1. VersiCell®
2. Waterproofing membrane
3. Geotextile
4. Coarse sand
5. Planting soil

### Landscape Deck





1. VersiCell®
2. Geomesh
3. Pebbles
4. Pipe support
5. Waterproofing membrane

## Pond Filtration



## Advantages

### Design Flexibility

Modules may be interlocked in one plane or at right angles to form continuous large panels, conduits or tanks.

### Easy Installation

Modules are easy to join into large or long pre-assembled panels for rapid installation minimising on-site disruption.

### Able to flex and bend as well as nest

Ability to flex allows **VersiCell® 3150** to be used against curved surfaces. On-site storage and container space requirements and transportation costs is halved by ability to nest and stack.

### Lightweight and High Strength

Honeycomb design gives the modules high compressive strength whilst remaining lightweight.

### Efficient

Open surface design and high volume internal void facilitates efficient drainage. A narrow module profile provides greater soil depth in planter boxes allowing a wider variety of plants to be used.

### Sustainable and Environmentally Friendly

**VersiCell®** is made from 100% recycled materials and support green label certification.

*VersiCell® is also known as Nordrain® and Nordrain® V. International patents pending.*

## Specifications

**Size** 500mm x 500mm\*

### Height

VersiCell® 3150 30mm

VersiCell® 3050 30mm

VersiCell® 2050 20mm

### Weight

VersiCell® 3150 ~ 2.2kg/m<sup>2</sup>

VersiCell® 3050 ~ 2.5kg/m<sup>2</sup>

VersiCell® 2050 ~ 2kg/m<sup>2</sup>

### Material

Recycled polypropylene

### Colour

Black

### Compressive Strength

VersiCell® 3150 max. 600kN/m<sup>2</sup>

VersiCell® 3050 max. 800kN/m<sup>2</sup>

VersiCell® 2050 max. 800kN/m<sup>2</sup>

### Discharge Capacity @ 1% gradient

VersiCell® 3150 ~16.5l/m.s

VersiCell® 3050 ~16.5l/m.s

VersiCell® 2050 ~13.0l/m.s

### Surface Void Area

~62%

### Internal Void Area

~95%

**Biological/Chemical Resistance** Unaffected by moulds and algae. Resistant to oils, acids, alkalis and bitumen.

*\*also available in 500 mm x 250 mm for VersiCell® 3050*

**Note:** The information provided in this brochure is based on current knowledge and experience and does not infer any legally binding assurance or warranty, expressed or implied. Intending purchasers should verify whether any changes to specifications or applications or otherwise have been made since the issue of this literature. Environmental-friendly recycled materials are used wherever possible and physical product properties including colour may differ due to source of raw materials used. Colour may also fade due to UV exposure. All components of the product are designed for specific application, design calculations and any variation and/or deviation therefrom shall be the responsibility of the Specifier and/or User.

**ELMICH** Singapore: +65 6356 2800  
info@elmich.com  
www.elmich.com



ISO 9001  
BUREAU VERITAS  
Certification



Strategic  
Partner of:



Distributed by: